

Fibre Optic Components

Catalogue 2017

Empowering businesses through innovative network solutions.

We have been pushing boundaries and providing innovative products and solutions to clients around the world for nearly two decades. Our experience has taught us, that innovation can be achieved when people collaborate. The process and results are overly rewarding when creative minds are put together, that is why we work with clients throughout the entire design and engineering process to bring their innovations to life. Our high-quality manufacturing process, means that we enable our engineers to bring their visions to life, with the speed and scale that our clients demand.

We use the most advanced manufacturing innovations available, reducing lead time and making us more responsive. Our advantage system for manufacturing that we use, allows for global breakthroughs, and drives a culture of continuous improvement, which involves all processes in between.

Datatronix believes that achieving product excellence requires rising above industry standards; being better than our competitors by developing superior designs and manufacturing them with excellent processes, tight controls, and first-rate materials. Indeed, higher levels of quality and reliability are symbols of all Datatronix products.



Commitment.

Delivering world-class client service and technical innovation are not just goals: they are imbedded in to Datatronix's DNA.



Trust.

We strive to under promise and over deliver. Datatronix earns the trust of clients, partners, and employees through actions every day.



Reliability.

Clients and business partners depend on Datatronix because of our uncompromising focus on quality.



ISO 9001:2008 Certified.

Products bearing the Datatronix name have been certified to meet the highest industry quality standards.



Fast Deployment.

We use the most advanced manufacturing innovations available, reducing lead time and making us more responsive.



Value.

Value is the combination of quality, efficacy, and a fair price. Datatronix supply superior products, affordably.

INDEX OF CONTENTS

Fibre Optic Components

Adaptors

p. 01-17

01

Connectors

p. 19-34

02

Attenuators

p. 36-37

03

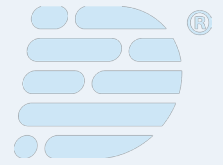


“Our clients and business partners can safely depend on Datatronix products because of our uncompromising focus on quality.”

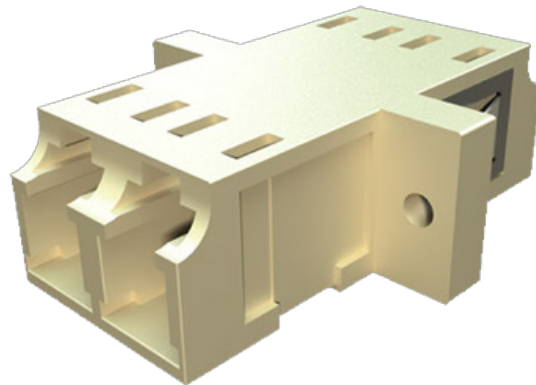
Fibre Optic Components

Adaptors

LC Adaptors	1
SC Adaptors	3
FC Adaptors	5
ST Adaptors	8
E2000 Adaptors	11
MTRJ Adaptors	14
Hybrid Adaptors	16



Adaptors



LC Adaptors

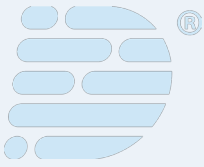
High quality LC adaptors designed and manufactured to offer low insertion loss and high re-mateability. They feature high precision alignment sleeves for improved reliability. Datatronix LC adaptors come with ceramic sleeves for both single mode and multimode. They are available in different colours, with options for flange or flangeless body and metal or inbuilt clips.

Applications

- Data centres
- Telecommunications networks
- FTTx applications
- CATV, LAN, MAN and WAN application
- Data processing networks
- Cable television
- Premises distribution

Features

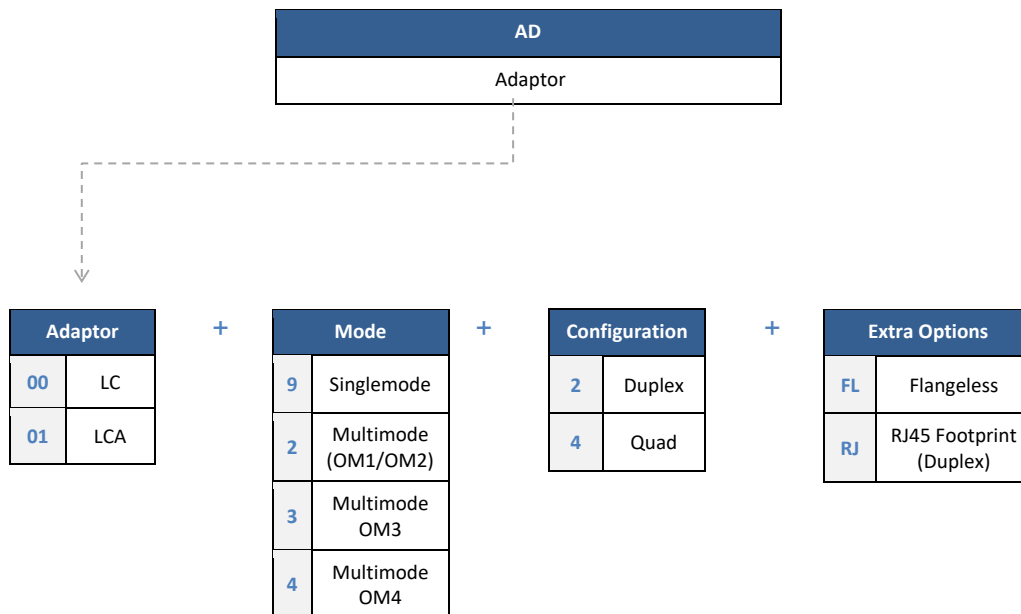
- Low insertion loss
- High re-mateability
- High precision alignment sleeve
- IEC 61754-20 compliant
- RoHS2, REACH and SvHC compliant
- Available in simplex, duplex and quad versions



Specifications

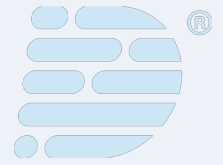
DESCRIPTION	CERAMIC	CONFORMANCE
Insertion Loss (Typical)	0.10dB	IEC 61300-3-4
Mating Durability	500	IEC 61300-2-2
Receptacle Retention Force	1N-2.5N	IEC 61754-20
Operating Temperature	-25°C to +70°C, 12 cycles	IEC 61300-2-22

Ordering Information

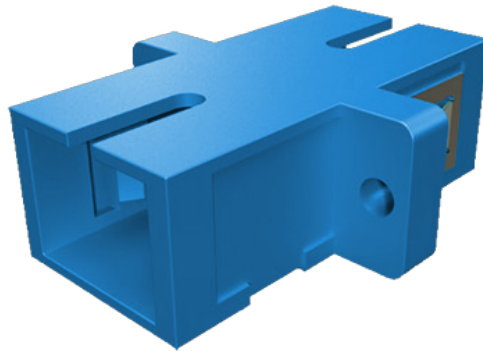


Examples:

- AD-00-9-2** - LC Adaptor Singlemode Duplex Blue with metal clips
- AD-01-9-4** - LC Adaptor Singlemode APC Quad Green with metal clips
- AD-00-3-2-FL** - LC Adaptor Multimode OM3 Duplex Aqua Flangeless with metal clips
- AD-00-4-4-RJ** - LC Adaptor Multimode OM4 Quad Erika Violet RJ45 footprint with in-built clips



Adaptors



SC Adaptors

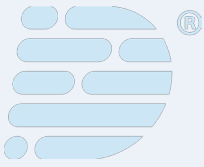
High-quality SC adaptors, designed and manufactured to offer low insertion loss and high re-mateability. They have high precision alignment sleeves for improved reliability. Datatronix SC adaptors come with ceramic sleeves for single blue, green, aqua and erica violet and phosphor bronze sleeve for beige. They are available in different colours with options for flange or flangeless body, metal clips or inbuilt clips. Each adaptor comes with a protective cap.

Applications

- Data centers
- Telecommunications networks
- FTTx applications
- Ethernet, Fibre channel, ATM, LAN, MAN and WAN
- Premise installations

Features

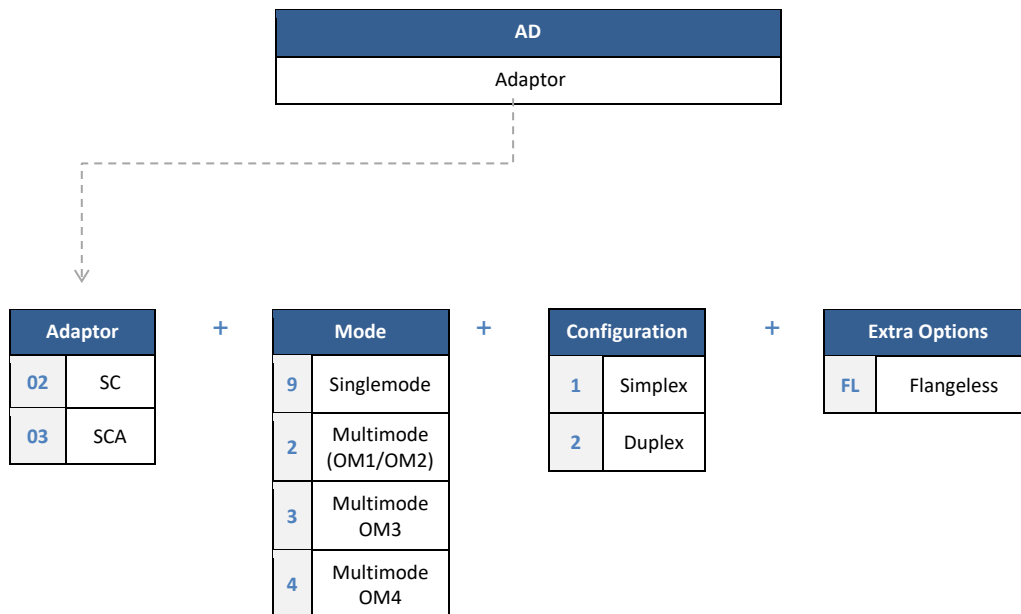
- Low insertion loss
- High re-mateability
- High precision alignment sleeve
- Zirconia ceramic sleeve for Blue, green, aqua and Erika violet
- Phosphor bronze sleeve for beige
- IEC 61754-4 compliant
- RoHS2, REACH SvHC compliant
- Available in simplex and duplex
- Available in Flanged and Flangeless versions



Specifications

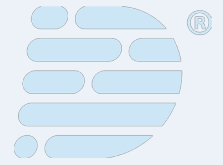
	CERAMIC	PHOSPHOR BRONZE	CONFORMANCE
Insertion Loss (Typical)	0.10dB	0.15dB	IEC 61300-3-4
Mating Durability	-	500	IEC 61300-2-2
Receptacle Retention Force	-	2N-5.9N	IEC 61754-4
Operating Temperature	-	-25°C to +70°C, 12 cycles	IEC 61300-2-22

Ordering Information



Examples:

- AD-02-9-2** - SC Adaptor Singlemode Duplex Blue
- AD-03-9-1** - SC Adaptor Singlemode Simplex APC Green
- AD-02-2-2** - SC Adaptor Multimode Duplex Beige
- AD-02-3-1-FL** - SC Adaptor Multimode OM3 Simplex Aqua Flangeless
- AD-02-4-2** - SC Adaptor Multimode OM4 Duplex Erika Violet



Adaptors



FC Adaptors

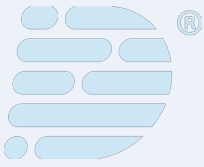
High quality metallic FC adaptors, designed and manufactured to offer low insertion loss and high re-mateability. They have high precision alignment sleeves for improved reliability. Datatronix FC adaptors come with ceramic sleeves for single mode and phosphor bronze sleeve for multimode.

Applications

- Local area networks
- Telecommunication networks
- Industrial and military applications
- Data processing networks
- Cable television
- Premises distribution
- Laboratory equipment
- Test and measurement equipment

Features

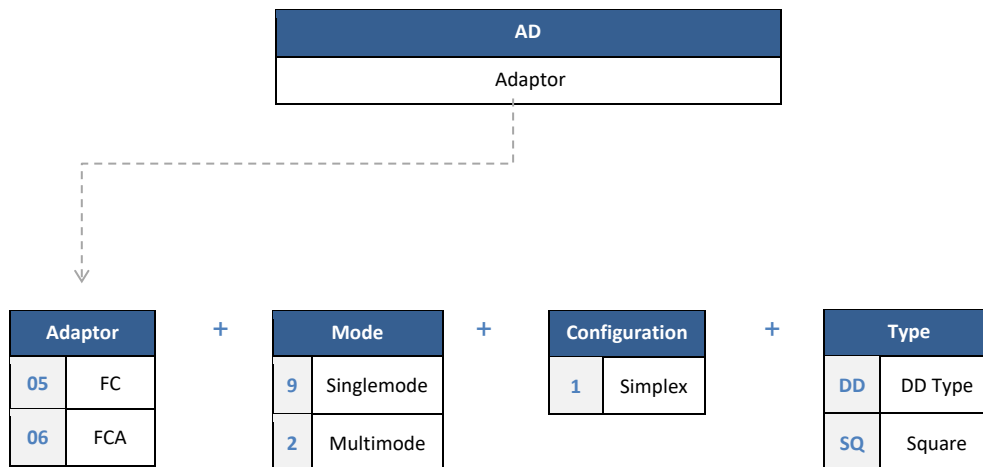
- Low insertion loss
- High re-mateability
- High precision alignment sleeve
- Narrow key, 2.06mm for APC and PC connectors
- IEC 61754-13 and TIA 604-4-A and
- RoHS2, REACH and SvHC compliant
- Available in simplex with M8 nut and double D footprint



Specifications

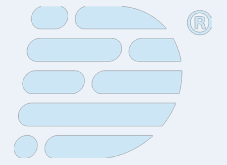
	CERAMIC	PHOSPHOR BRONZE	CONFORMANCE
Insertion Loss (Typical)	0.10 dB	0.15dB	IEC 61300-3-4
Mating Durability	500	500	IEC 61300-2-2
Receptacle Retention Force	2N – 5.9N	2N – 5.9N	IEC 61754-13
Operating Temperature	-25°C to +70°C, 12 cycles	-25°C to +70°C, 12 cycles	IEC 61300-2-22

Ordering Information

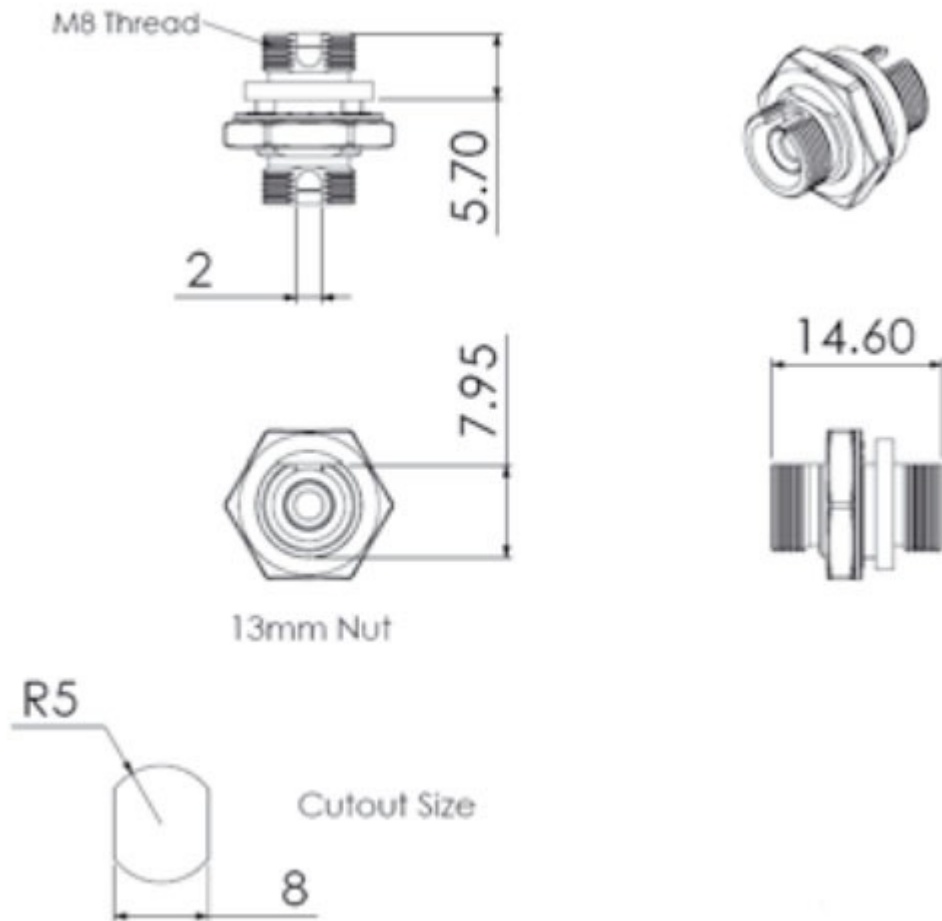


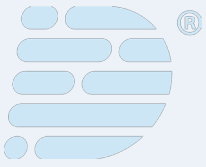
Examples:

- AD-05-9-1-DD** - FC Adaptor Singlemode Simplex DD Mount Type
- AD-05-2-1-DD** - FC Adaptor Multimode Simplex DD Mount Type
- AD-06-9-1-SQ** - FC Adaptor Singlemode APC Simplex Square Mount Type



Technical Drawing





ST Adaptors

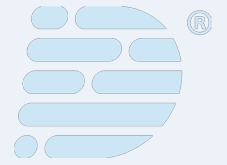
High-quality ST adaptors, designed and manufactured to offer low insertion loss and high re-mateability. They feature high precision alignment sleeves for improved reliability. Datatronix ST adaptors come with a ceramic sleeve for the singlemode and phosphor bronze sleeve for multimode. Their housing is available in double D footprint type.

Applications

- Local area networks
- Data processing networks
- Premises distribution

Features

- Low insertion loss
- High re-mateability
- High precision alignment sleeve
- IEC 61754-2 compliant
- RoHS2, REACH and SvHC compliant
- Available in simplex and duplex

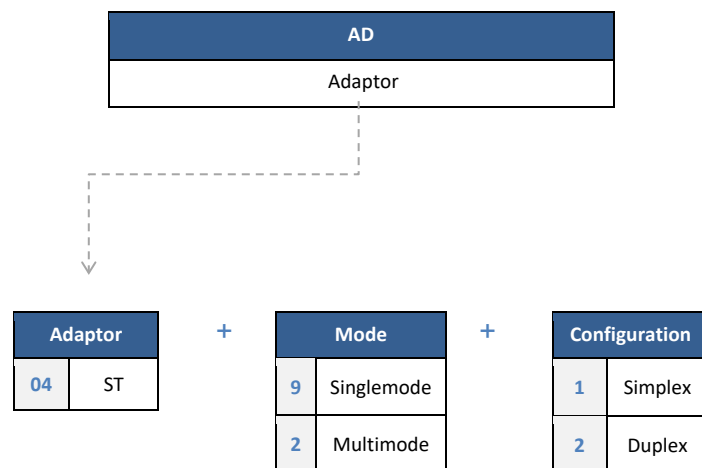


Adaptors

Specifications

OPTICAL PERFORMANCE	CERAMIN	PHOSPHOR BRONZE	CONFORMANCE
Insertion Loss (Typical)	0.10dB	0.15dB	IEC 61300-3-4
Mating Durability	500	500	IEC 61300-2-2
Receptacle Retention Force	2N-5.9N	2N-5.9N	IEC 61754-2
Operating Temperature	-25°C to +70°C, 12 cycles	-25°C to +70°C, 12 cycles	IEC 61300-2-22

Ordering Information



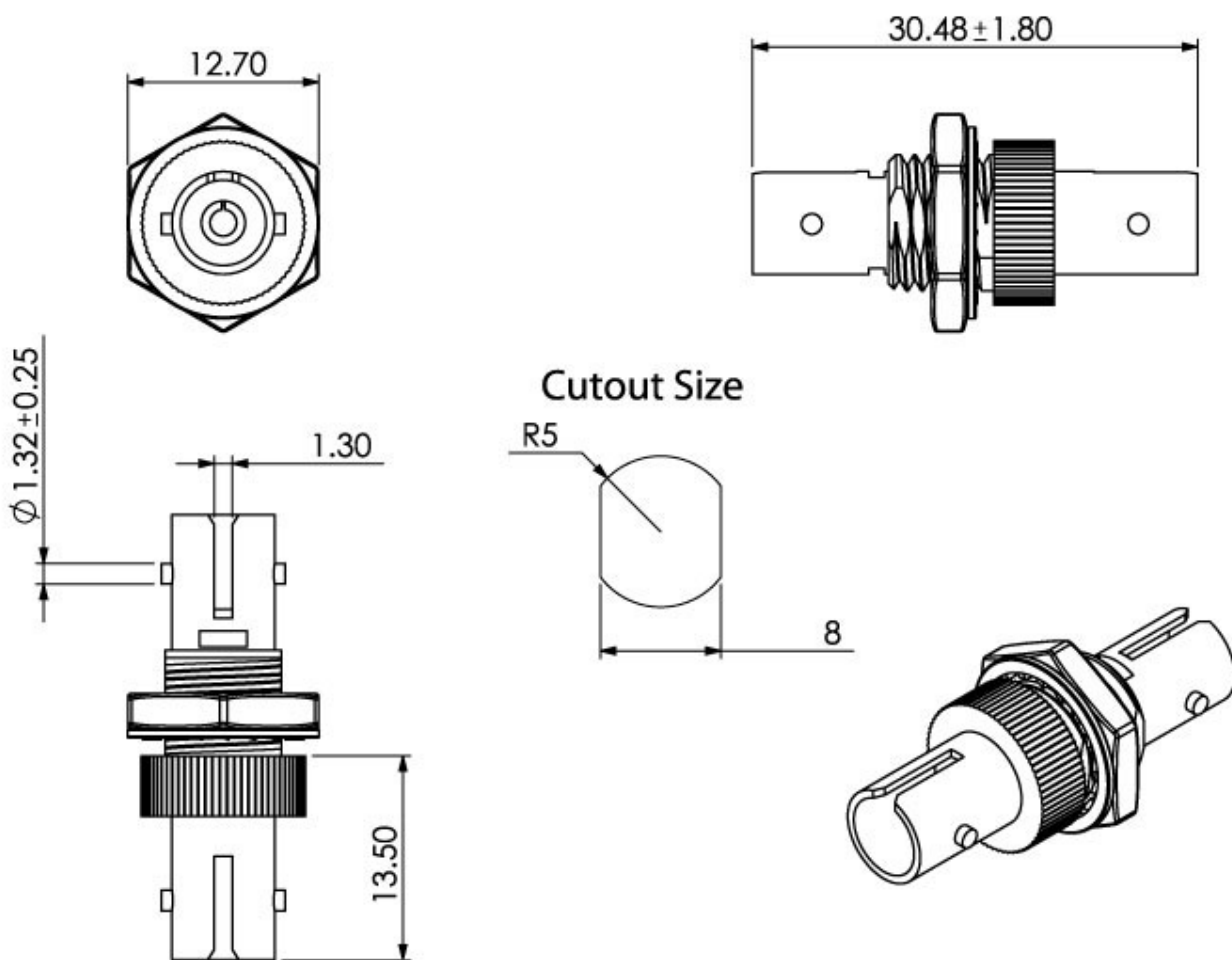
Examples:

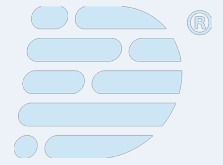
AD-04-9-1 - ST Adaptor Singlemode Simplex

AD-04-2-1 - ST Adaptor Multimode Simplex

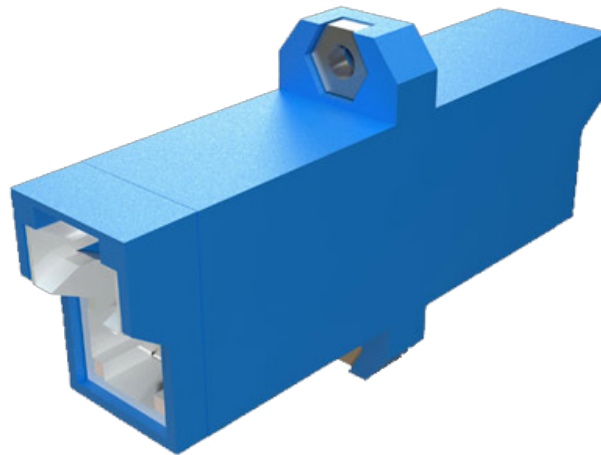
AD-04-9-2 - ST Adaptor Singlemode Duplex

Technical Drawing





Adaptors



E2000 Adaptors

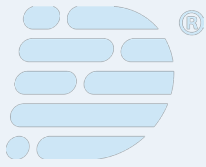
High quality E2000 adaptors, designed and manufactured to offer low insertion loss and high re-mateability. They have an inbuilt mechanism that opens the shutter and guides the ferrule in the alignment sleeve. Datatronix E2000 adaptors come with ceramic sleeves for both singlemode and multimode. They are available in blue, green or beige and a flangeless body option.

Applications

- Telecommunications networks
- WDM, DWDM applications
- High power laser applications
- Test and measurement equipment

Features

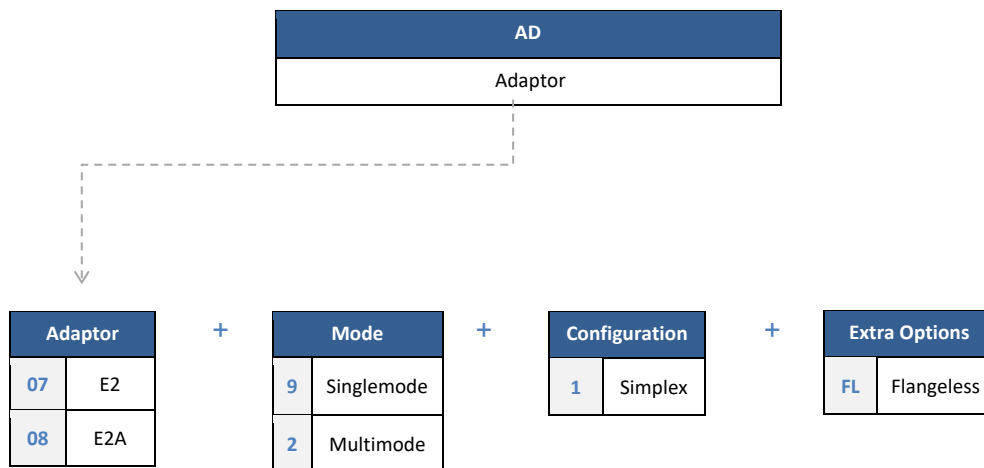
- Low insertion loss
- High re-mateability
- High precision alignment sleeve
- IEC 61754-15 compliant
- RoHS, REACH and SvHC compliant
- Available in simplex



Specifications

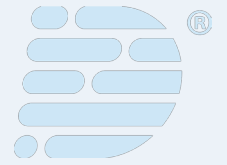
	CERAMIC	CONFORMANCE
Insertion Loss (Typical)	0.1 dB	IEC 61300-3-4
Mating Durability	500	IEC 61300-2-2
Receptacle Retention Force	2N – 5.9N	IEC 61754-20
Operating Temperature	-25°C to +70°C, 12 cycles	IEC 61300-2-22

Ordering Information



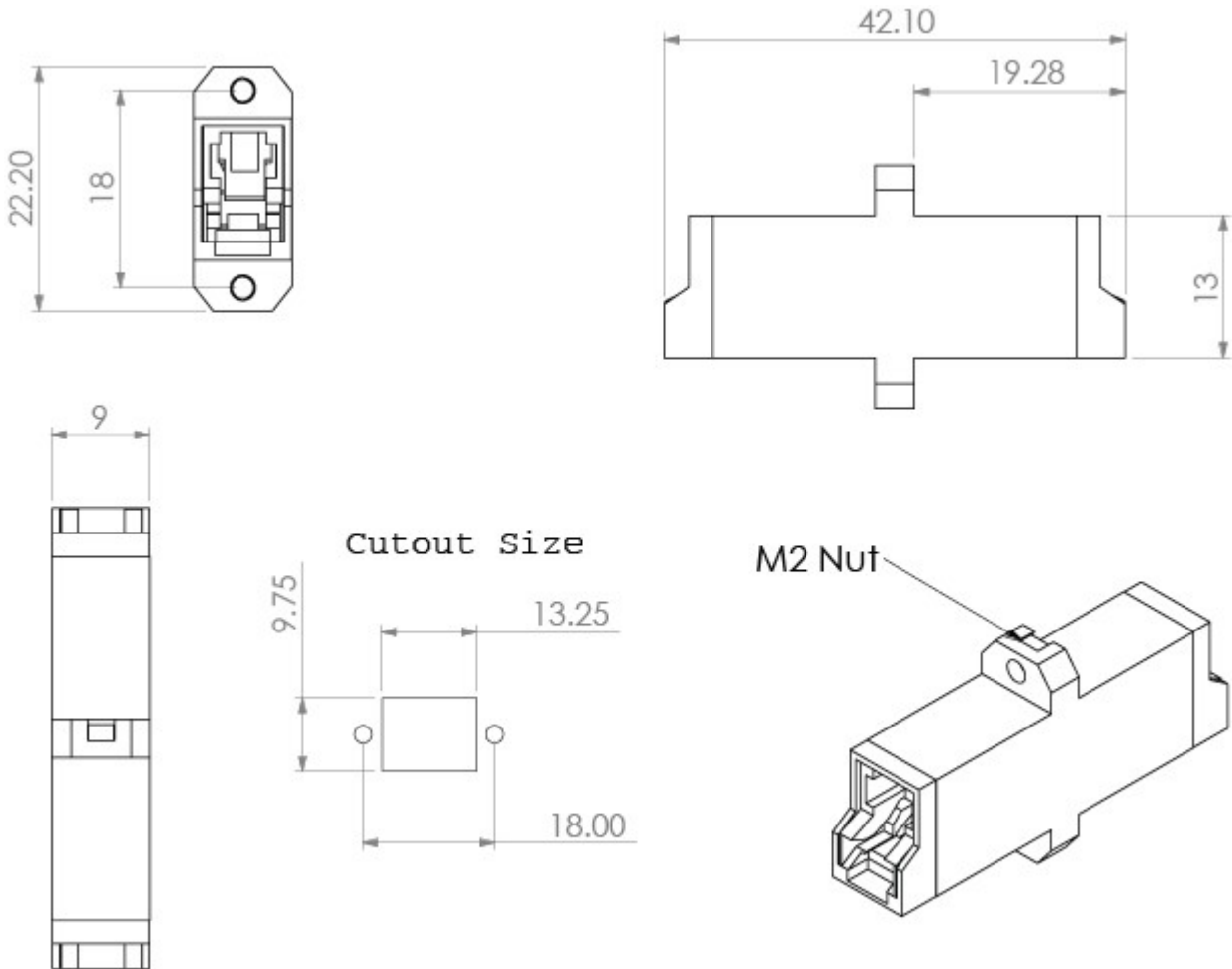
Examples:

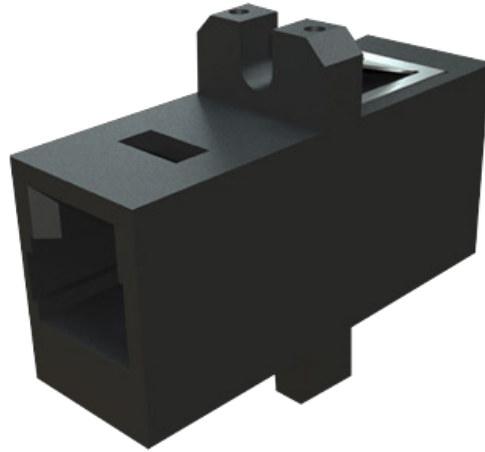
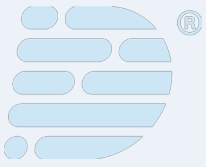
- AD-07-9-1** - E2000 Adaptor Singlemode Blue
- AD-07-2-1** - E2000 Adaptor Multimode Beige
- AD-08-9-1-FL** - E2000 Adaptor Singlemode APC Green



Adaptors

Technical Drawing





MTRJ Adaptors

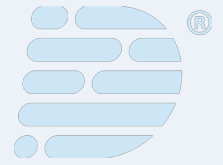
High quality MTRJ adaptors, designed and manufactured to offer low insertion loss and high re-mateability. Datatronix MTRJ adaptors are Plug-jack (RJ-45), SC simplex footprint and available in black and beige colours. Please note that when joining MTRJ connectors with MTRJ adaptors, one connector must always be male with pins and one must be female without pins.

Applications

- Gigabit Ethernet
- Asynchronous Transmission Method (ATM)
- Premise installations
- Industrial and military applications

Features

- Plug-jack (RJ-45) design
- TIA/EIA568-A compliant
- Precision moulded for proper alignment
- Available in SC simplex footprint
- Available in black and beige colored body

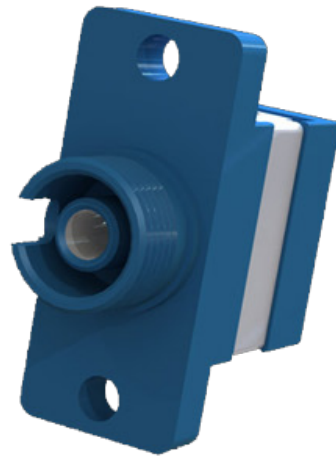
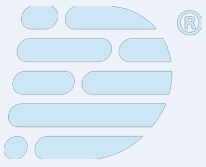


Specifications

	SINGLEMODE	CONFORMANCE
Insertion Loss (Typical)	0.20dB	IEC 61300-3-4
Mating Durability	500 matings	IEC 61300-2-2
Receptacle Retention Force	2N-5.9N	IEC 61754.13
Vibration Test	10-55Hz 0.75 amplitude	IEC 61300-2-1
Drop Test	Drop height 1m, 5 drops	IEC 61300-2-12
Operating Temperature	-25°C to +70°C, 12 cycles	IEC 61300-2-22

Ordering Information

DESCRIPTION	PART NUMBER
MTRJ adaptor Multimode Beige	AD-10-2-2
MTRJ Adaptor Multimode Black	AD-10-2-2-BK



Hybrid Adaptors

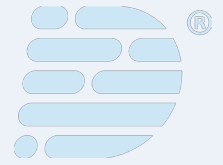
High quality hybrid adaptors, designed and manufactured to offer low insertion loss and high re-mateability. They have high precision alignment sleeves for improved reliability. Hybrid adaptors are used for the mating of two different type connectors. Datatronix hybrid adaptors are available in single mode, multimode and many different connector-type configurations

Applications

- Telecommunications networks
- Local area networks
- Industrial and military applications
- Cable television
- Premises distribution
- Laboratory and test equipment

Features

- Low insertion loss
- High re-mateability
- High precision alignment sleeve
- IEC, TIA/EIA, Telcordia compliant
- RoHS2, REACH and SvHC compliant
- Available in plastic or metal body



Specifications

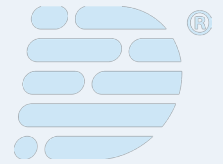
	CERAMIC	PHOSPHOR BRONZE	CONFORMANCE
Insertion Loss (Typical)	0.10dB	0.15dB N/A	IEC 61300-3-4
Mating Durability	500	500	IEC 61300-2-2
Receptacle Retention Force	2N-5.9N	2N-5.9N	IEC 61754-13
Operating Temperature	-25°C to +70°C, 12 cycles	-25°C to +70°C, 12 cycles	IEC 61300-2-22

Ordering Information

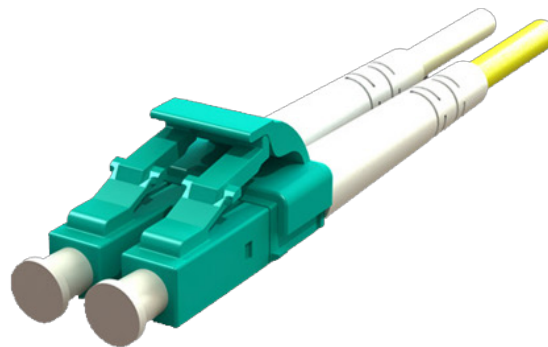
Male to Female		Female to Female	
CONFIGURATION	PART NUMBER	CONFIGURATION	PART NUMBER
LC - FCA Simplex	ADHM-0006-9-1	SC - ST Simplex with metal body	ADHF-0204-9-1-MT
LC - SC Simplex	ADHM-0002-9-1	LC - ST Simplex with metal body	ADHF-0004-9-1-MT
LC - SCA Simplex	ADHM-0003-9-1	FC - SC Simplex with metal body	ADHF-0502-9-1-MT
SC - FC Simplex	ADHM-0305-9-1	LC - SC Simplex with metal body	ADHF-0002-9-1-MT
SC - LC Simplex	ADHM-0200-9-1	FC - LC Simplex with metal body	ADHF-0500-9-1-MT
SC - LCA Simplex	ADHM-0201-9-1	FCA - SCA Simplex with metal body	ADHF-0603-9-1-MT
FC - SC Simplex	ADHM-0502-9-1	LCA - SCA Simplex with metal body	ADHF-0103-9-1-MT
FC - LC Simplex	ADHM-0500-9-1	FCA - LCA Simplex with metal body	ADHF-0601-9-1-MT
ST - SC Simplex	ADHM-0402-9-1	FC - SC Duplex with metal body	ADHF-0502-9-2-MT
ST - LC Simplex	ADHM-0400-9-1	LC - SC Duplex with metal body	ADHF-0002-9-2-MT
E2000 - SC Simplex	ADHM-0702-9-1		
E2000 - LC Simplex	ADHM-0700-9-1		
E2000 - LCA Simplex	ADHM-0701-9-1		

Connectors

LC Connectors	19
SC Connector	22
FC Connectors	25
ST Connectors	28
SC Field Installable Connectors	31
ST Field Installable Connectors	33



Connectors



LC Connectors

High-quality LC connectors, manufactured including Low Loss and High Performance Grades which are suitable for modern high demand and enhanced performance and applications. They feature a 1.25mm Zirconia ferrule in a small form factor fibre optic connector housing with a snag free latch which gives an audible click upon engaging for reliable and high density connections.

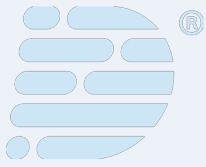
Datatronix LC connectors are available for singlemode UPC with white or blue boots, for APC with green boots and for multimode PC with white, red or black boots. They are suitable for 900µm or 3mm cable diameters or with heat shrink and crimp cable retention method for 2mm cable diameters (white and yellow for duplex and yellow for simplex). They are available in simplex and duplex (with clips) in standard colors including blue (single mode), green (single mode APC) and beige (multimode).

Applications

- Data centres
- FTTx
- Telecommunication networks
- LAN, MAN and WAN applications
- Cable television
- Premises distribution

Features

- Low insertion loss and back reflection
- IEC 61754-20 and TIA 604-10-B, FOCIS-10 compliant
- Small form factor design with snag free latch for easy insertion and consistent connection
- Zirconia ceramic ferrule available in several performance grades
- Connector housing and duplex clip available in different colors
- RoHS, REACH and SvHC compliant



Specifications

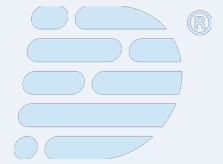
MECHANICAL PROPERTIES	CRITERIA	EFFECT	CONFORMANCE
Mating Durability	500 matings	<0.2 dB change	IEC 61300-2-2
Vibration	10-55Hz, 0.75 amplitude	<0.2 dB change	IEC 61300-2-1
Drop	Drop height 1m, 5 drops	<0.2 dB change	IEC 61300-2-12
Cable Retention	Magnitude 70N	<0.2 dB change	IEC 61300-2-4
Cable Torsion	1.5kg – 2.5kg for 2mm-3mm cable diameter	<0.2 dB change	IEC 61300-2-5
Operating Temperature	25°C to +70°C, 12 cycles	<0.2 dB change	IEC 61300-2-22
Cold	-25 to 96 hours	<0.2 dB change	IEC 61300-2-17
Dry Heat	+70 to 96 hours	<0.2 dB change	IEC 61300-2-18

LC Connector PC and APC- Singlemode

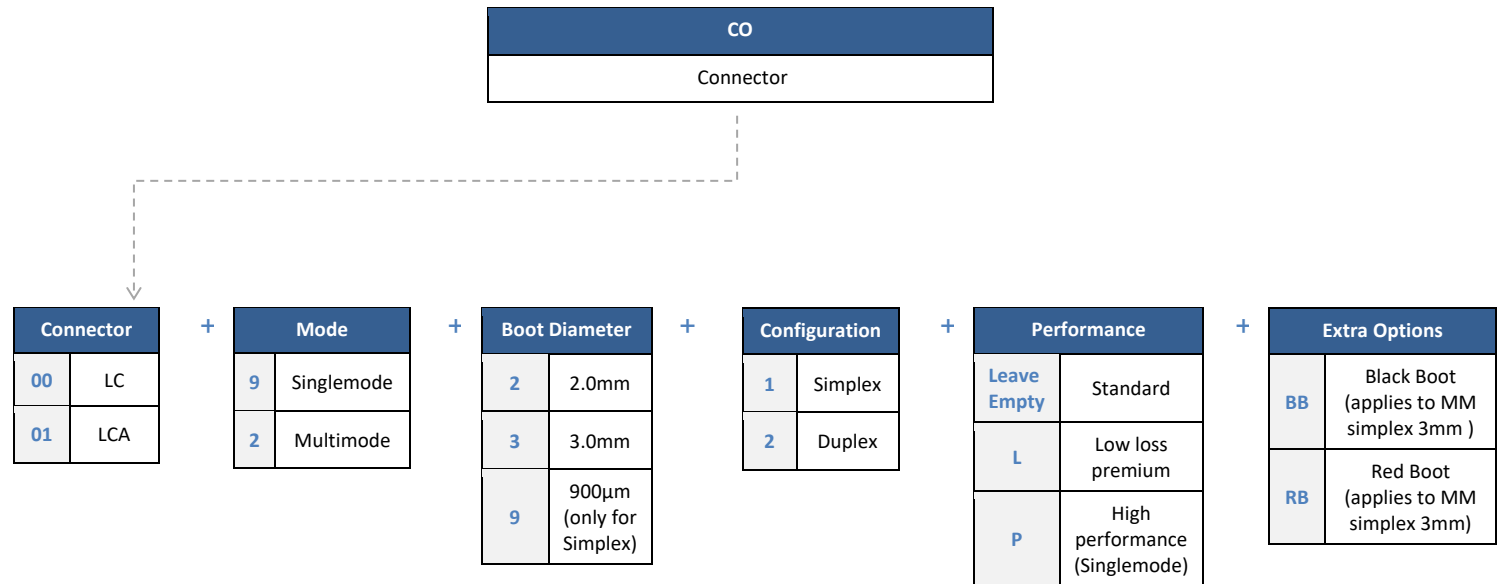
OPTICAL PERFORMANCE	HIGH PERFORMANCE	LOW LOSS	PREMIUM STANDARD	CONFORMANCE
IL MAX/Master (Acceptance)	0.10dB	0.15dB	0.25dB	IEC 61300-3-4
IL MAX/Random (97%)	0.20dB	0.30dB	0.40dB	IEC 61300-3-34
Ave/Master	0.08dB	0.12dB	0.18dB	IEC 61300-3-4
Ave/Random	0.08dB	0.12dB	0.18dB	IEC 61300-3-34
Return Loss	55/70dB	55/65dB	55/65dB	IEC 61300-3-6

LC Connector - Multimode

OPTICAL PERFORMANCE	LOW LOSS	PREMIUM STANDARD	CONFORMANCE
IL MAX/Master (Acceptance)	0.15dB	0.30dB	IEC 61300-3-4
IL MAX/Random (97%)	0.25dB	0.40dB	IEC 61300-3-34
Ave/Master	0.08dB	0.15dB	IEC 61300-3-4
Ave/Random	0.10dB	0.20dB	IEC 61300-3-34

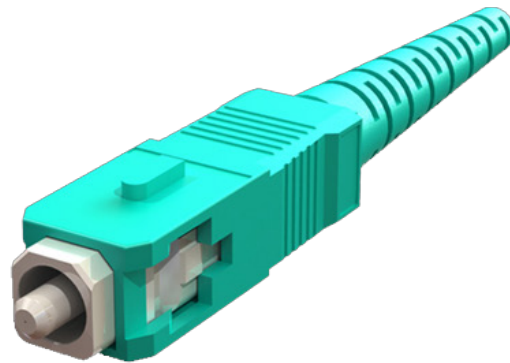
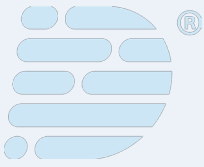


Ordering Information



Examples:

- CO-00-9-9-1** - Standard LC Connector Singlemode Simplex 900µm Boot
- CO-01-9-2-2-L** - Low Loss Premium LC Connector Singlemode Duplex APC 2mm Boot
- CO-01-2-3-2** - Standard LC Connector Multimode Duplex 3mm Boot
- CO-01-9-2-2-P** - High Performance LC Connector Singlemode Duplex 2mm Boot



SC Connectors

High-quality SC connectors, manufactured including Low Loss and High Performance Grades which are suitable for modern high demand and enhanced performance and applications. They feature a 2.5mm Zirconia Ceramic ferrule and a push/pull coupling mechanism for a fast and reliable connection.

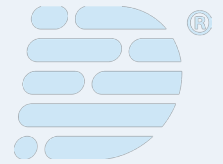
Datatronix simplex and duplex SC connectors are available for single mode UPC with blue boots, for APC with green boots and for multimode PC with red or black boots suitable for 900µm, 2mm or 3mm cable diameters.

Applications

- Telecommunications networks
- Data centres
- FTTx
- Cable television
- LAN, MAN and WAN application
- Premises distribution

Features

- Low insertion loss and back reflection
- IEC 61754-4 and TIA 604-3-B and FOCIS-3 compliant
- Push-pull coupling mechanism for easy insertion and consistent connection
- Connector housing and duplex clip available in different colors
- Zirconia ceramic ferrule available in several performance grades
- RoHS, REACH and SvHC compliant



Specifications

MECHANICAL PROPERTIES	CRITERIA	EFFECT	CONFORMANCE
Mating Durability	500 matings	<0.2 dB change	IEC 61300-2-2
Vibration	10-55Hz, 0.75 amplitude	<0.2 dB change	IEC 61300-2-1
Drop	Drop height 1m, 5 drops	<0.2 dB change	IEC 61300-2-12
Cable Retention	Magnitude 90N	<0.2 dB change	IEC 61300-2-4
Cable Torsion	1.5kg – 2.5kg for 2mm-3mm cable diameter	<0.2 dB change	IEC 61300-2-5
Operating Temperature	25°C to +70°C, 12 cycles	<0.2 dB change	IEC 61300-2-22
Cold	-25 to 96 hours	<0.2 dB change	IEC 61300-2-17
Dry Heat	+70 to 96 hours	<0.2 dB change	IEC 61300-2-18

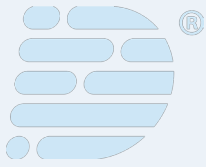
SC Connector PC and APC- Singlemode

OPTICAL PERFORMANCE	HIGH PERFORMANCE	LOW LOSS	PREMIUM STANDARD	CONFORMANCE
IL MAX/Master (Acceptance)	0.10dB	0.15dB	0.25dB	IEC 61300-3-4
IL MAX/Random (97%)	0.20dB	0.30dB	0.40dB	IEC 61300-3-34
Ave/Master	0.08dB	0.12dB	0.18dB	IEC 61300-3-4
Ave/Random	0.08dB	0.12dB	0.18dB	IEC 61300-3-34
Return Loss	55/70dB	55/65dB	55/65dB	IEC 61300-3-6

SC Connector - Multimode

OPTICAL PERFORMANCE	LOW LOSS	PREMIUM STANDARD	CONFORMANCE
IL MAX/Master (Acceptance)	0.15dB	0.30dB	IEC 61300-3-4
IL MAX/Random (97%)	0.25dB	0.40dB	IEC 61300-3-34
Ave/Master	0.08dB	0.15dB	IEC 61300-3-4
Ave/Random	0.10dB	0.20dB	IEC 61300-3-34

Ordering Information

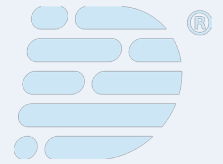


CO	
Connector	

Connector		+	Mode		+	Boot Diameter		+	Configuration		+	Performance	
02	SC		9	Singlemode		2	2.0mm		1	Simplex		Leave Empty	Standard
03	SCA		2	Multimode		3	3.0mm		2	Duplex		L	Low loss premium
						9	900µm (only for Simplex)					P	High performance (Singlemode)

Examples:

- CO-02-9-9-1 - Standard SC Connector Singlemode Simplex 900µm Boot
- CO-03-9-2-2-L - Low Loss Premium SC Connector Singlemode Duplex APC 2mm Boot
- CO-02-2-3-2 - Standard SC Connector Multimode Duplex 3mm Boot
- CO-01-9-2-1-P - High Performance SC Connector Singlemode Simplex 2mm Boot



Connectors



FC Connectors

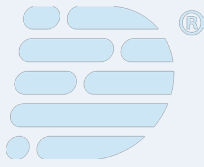
High quality FC connectors, manufactured including Low Loss and High Performance Grades which are suitable for modern high demand and enhanced performance and applications. They feature a 2.5 mm ferrule and a threaded metal coupling nut, for a secure connection in laboratory testing for consistent results and in high vibration environments. Datatronix FC Connectors are available for single mode UPC with blue boots, APC with green boots and multimode PC with black boots suitable for 900µm, 2mm or 3mm cable diameters.

Applications

- Telecommunication networks
- Local area networks
- Distribution application
- Premises distribution
- Test and laboratory equipment

Features

- Low insertion loss and back reflection
- IEC 61754-13, TIA 604-4-B and FOCIS-4 compliant
- Precision anti rotation key for mechanical stability
- Nickel plated metal body corrosion resistant
- Zirconia ceramic ferrule available in several performance grades
- RoHS, REACH and SvHC compliant



Specifications

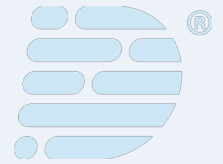
MECHANICAL PROPERTIES	CRITERIA	EFFECT	CONFORMANCE
Mating Durability	500 matings	<0.2 dB change	IEC 61300-2-2
Vibration	10-55Hz, 0.75 amplitude	<0.2 dB change	IEC 61300-2-1
Drop	Drop height 1m, 5 drops	<0.2 dB change	IEC 61300-2-12
Cable Retention	Magnitude 90N	<0.2 dB change	IEC 61300-2-4
Cable Torsion	1.5kg – 2.5kg for 2mm-3mm cable diameter	<0.2 dB change	IEC 61300-2-5
Operating Temperature	25°C to +70°C, 12 cycles	<0.2 dB change	IEC 61300-2-22
Cold	-25 to 96 hours	<0.2 dB change	IEC 61300-2-17
Dry Heat	+70 to 96 hours	<0.2 dB change	IEC 61300-2-18

FC Connector PC and APC- Singlemode

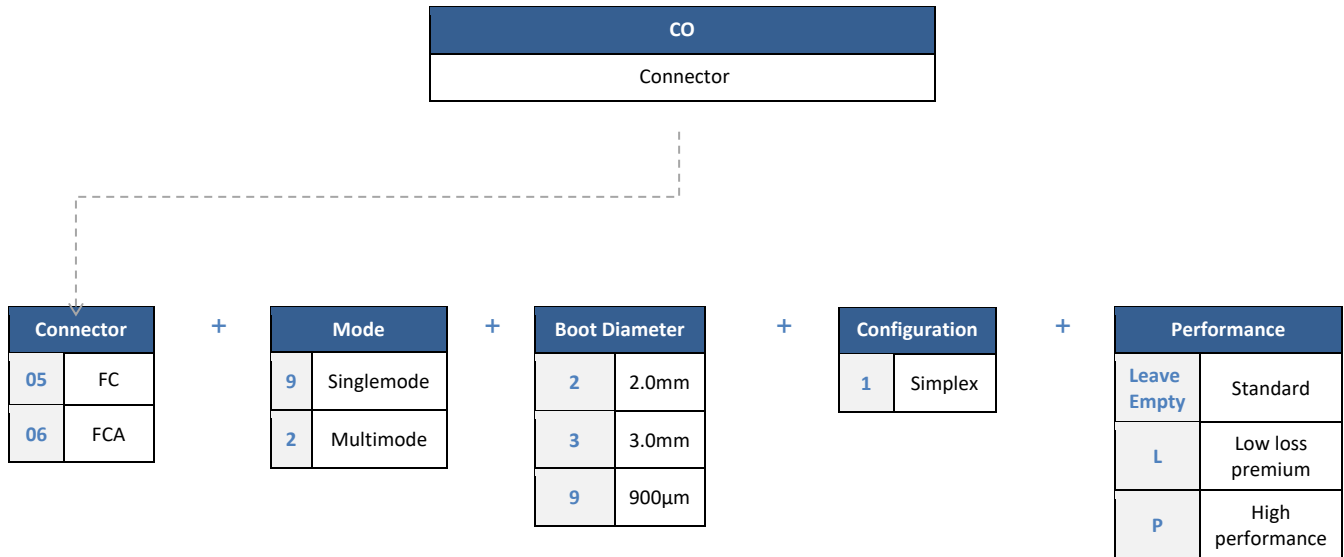
OPTICAL PERFORMANCE	HIGH PERFORMANCE	LOW LOSS	PREMIUM STANDARD	CONFORMANCE
IL MAX/Master (Acceptance)	0.10dB	0.15dB	0.25dB	IEC 61300-3-4
IL MAX/Random (97%)	0.20dB	0.30dB	0.40dB	IEC 61300-3-34
Ave/Master	0.08dB	0.12dB	0.18dB	IEC 61300-3-4
Ave/Random	0.08dB	0.12dB	0.18dB	IEC 61300-3-34
Return Loss	55/70dB	55/65dB	55/65dB	IEC 61300-3-6

FC Connector - Multimode

OPTICAL PERFORMANCE	LOW LOSS	PREMIUM STANDARD	CONFORMANCE
IL MAX/Master (Acceptance)	0.15dB	0.30dB	IEC 61300-3-4
IL MAX/Random (97%)	0.25dB	0.40dB	IEC 61300-3-34
Ave/Master	0.08dB	0.15dB	IEC 61300-3-4
Ave/Random	0.10dB	0.20dB	IEC 61300-3-34



Ordering Information

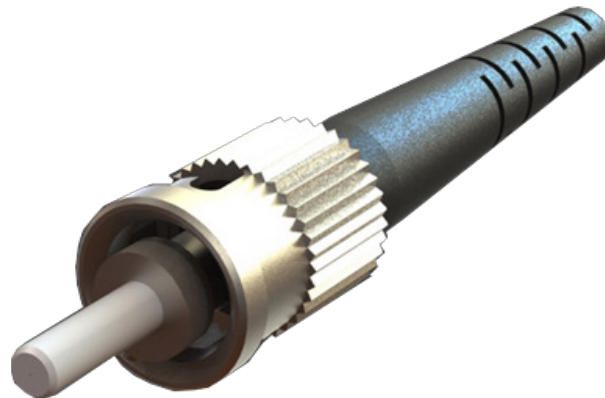
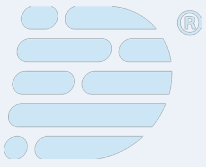


Examples:

CO-05-2-2-1 - Standard FC Connector Multimode Simplex 2mm Boot

CO-06-9-3-1-L – Low Loss Premium FC Connector Singlemode Simplex APC 3mm Boot

CO-05-9-9-1-P – High Performance FC Connector Singlemode Simplex 900µm Boot



ST Connectors

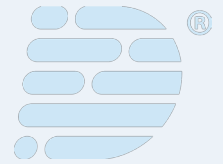
High-quality ST connectors, manufactured including Low Loss and High Performance Grades which are suitable for modern high demand and enhanced performance and applications. They feature a 2.5 mm with quick release bayonet style body for ease of use. Datatronix FC Connectors are available for single mode UPC with blue boots, APC with green boots and multimode PC with black boots suitable for 900µm, 2mm or 3mm cable diameters.

Applications

- Local area networks
- Distribution applications
- Premises distribution

Features

- Low insertion loss and back reflection
- IEC 61754-2, TIA 604-2-B and FOCIS-2 compliant
- Bayonet style (stick and twist) housing for easy connection
- Nickel plated metal body
- Zirconia ceramic ferrule available in several performance grades
- RoHS, REACH and SvHC compliant



Specifications

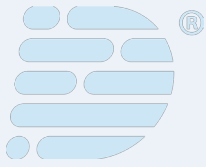
MECHANICAL PROPERTIES	CRITERIA	EFFECT	CONFORMANCE
Mating Durability	500 matings	<0.2 dB change	IEC 61300-2-2
Vibration	10-55Hz, 0.75 amplitude	<0.2 dB change	IEC 61300-2-1
Drop	Drop height 1m, 5 drops	<0.2 dB change	IEC 61300-2-12
Cable Retention	Magnitude 90N	<0.2 dB change	IEC 61300-2-4
Cable Torsion	1.5kg – 2.5kg for 2mm-3mm cable diameter	<0.2 dB change	IEC 61300-2-5
Operating Temperature	25°C to +70°C, 12 cycles	<0.2 dB change	IEC 61300-2-22
Cold	-25 to 96 hours	<0.2 dB change	IEC 61300-2-17
Dry Heat	+70 to 96 hours	<0.2 dB change	IEC 61300-2-18

ST Connector - Singlemode

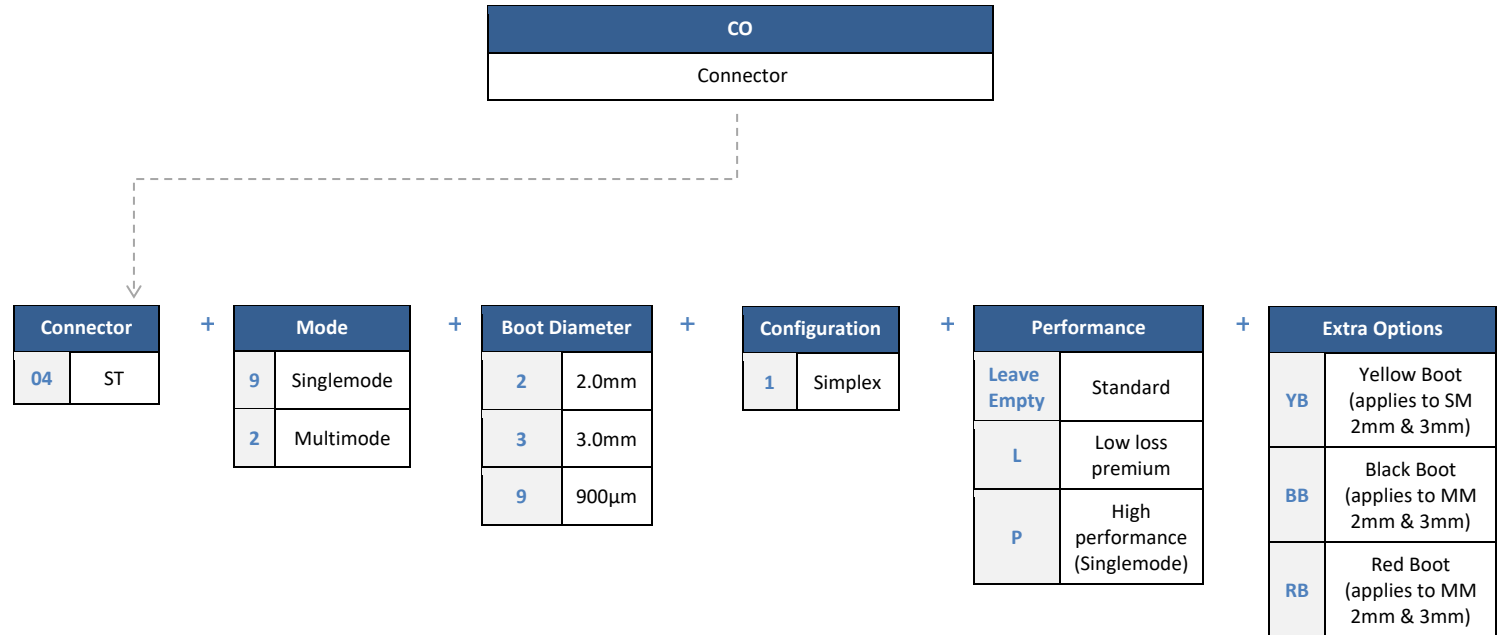
OPTICAL PERFORMANCE	HIGH PERFORMANCE	LOW LOSS	PREMIUM STANDARD	CONFORMANCE
IL MAX/Master (Acceptance)	0.10Db	0.15dB	0.25dB	IEC 61300-3-4
IL MAX/Random (97%)	0.20Db	0.30dB	0.40dB	IEC 61300-3-34
Ave/Master	0.08Db	0.12dB	0.18dB	IEC 61300-3-4
Ave/Random	0.08Db	0.12dB	0.18dB	IEC 61300-3-34
Return Loss	55/70Db	55/65dB	55/65dB	IEC 61300-3-6

ST Connector - Multimode

OPTICAL PERFORMANCE	LOW LOSS	PREMIUM STANDARD	CONFORMANCE
IL MAX/Master (Acceptance)	0.15dB	0.30dB	IEC 61300-3-4
IL MAX/Random (97%)	0.25dB	0.40dB	IEC 61300-3-34
Ave/Master	0.08dB	0.15dB	IEC 61300-3-4
Ave/Random	0.10dB	0.20dB	IEC 61300-3-34

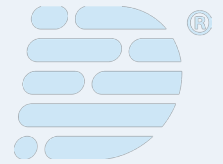


Ordering Information



Examples:

- CO-04-9-9-1 - Standard ST Connector Singlemode Simplex 900µm Boot
- CO-04-9-2-1-P-YB- High Performance ST Connector Singlemode Duplex APC 2mm Yellow Boot
- CO-01-2-3-1-L-BB - High Performance ST Connector Multimode Duplex 3mm Black Boot



Connectors



SC Field Installable Connectors

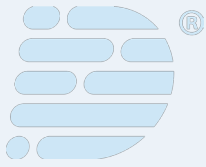
High-quality SC field-installable connectors (FIC), factory terminated and polished to make fibre fast and reliable terminations. The use of FIC SC connector reduces the installation time providing ease of use with reliable results. Datatronix FIC SC connectors have a window feature so that they can be tested with a visual fault locator. They require no polishing, crimping or epoxy.

Applications

- FTTH
- Quick repair of optical networks
- End user termination
- Hazardous environment termination where fusion splicing is prohibited

Features

- Polished connector incorporating a mechanical splice
- Available in single mode and multimode
- Available for 250µm, 900µm, 2mm, 3mm and 2x3mm cables
- Reliable and enhanced optical performance
- Compatible with standard SC adaptors
- Termination can be repeated 2-3 times
- Packaging comes with a cable/buffer stripping template
- Compliant with IEC, EIA/TIA and Telcordia
- Fibre preparation kit available



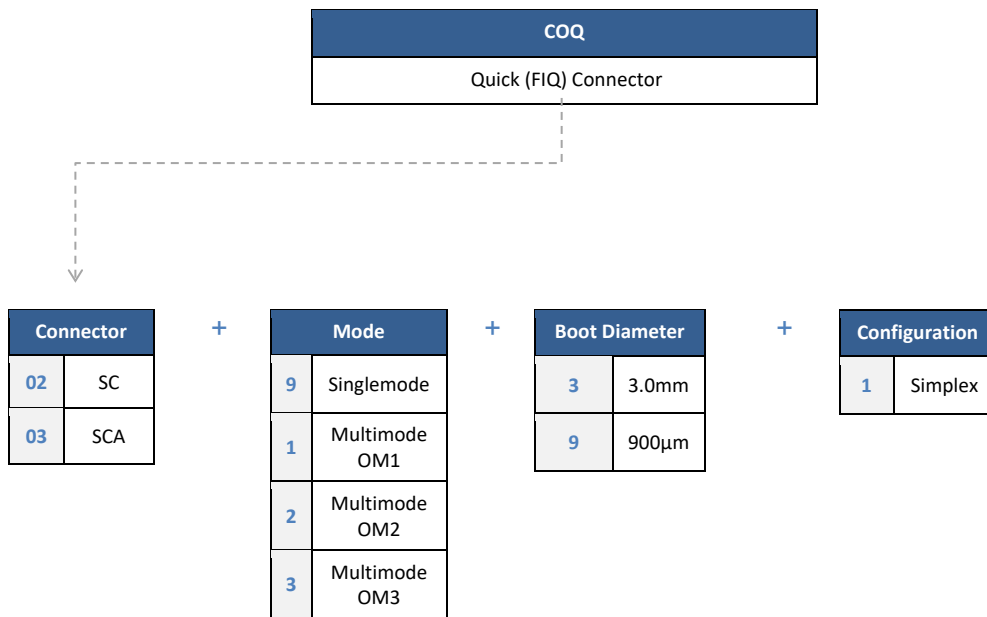
Specifications

DESCRIPTION

Fibre Type	Singlemode and Multimode
Insertion Loss (Max)*	0.50dB
Insertion Loss (Typical)*	0.30dB
Return Loss (Typical)*	50dB/55dB
Polishing Type	UPC and APC

*Using proper cleave process

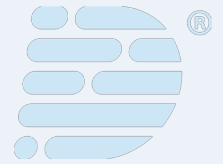
Ordering Information



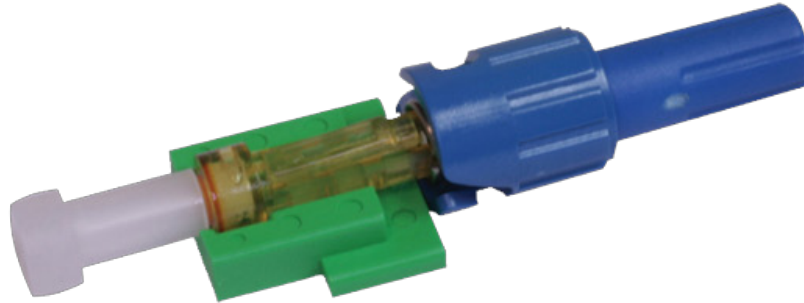
Examples:

- COQ-02-2-3-1** - Quick (FIQ) SC Connector Multimode OM2 Simplex 3mm Boot
- COQ-03-9-3-1** - Quick (FIQ) SC Connector Singlemode Simplex APC 3mm Boot
- COQ-02-3-9-1** - Quick (FIQ) SC Connector Multimode OM3 Simplex 900µm Boot

Please contact us for further information about the FIC termination Kit.



Connectors



ST Field Installable Connectors

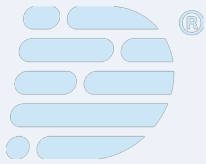
High-quality ST field-installable connectors (FIC), factory terminated and polished to make fibre fast and reliable terminations. The use of FIC ST connector reduces the installation time providing ease of use with reliable results. Datatronix FIC ST connectors have a window feature so that they can be tested with a visual fault locator. They require no polishing, crimping or epoxy.

Applications

- FTTH
- Quick repair of optical networks
- End user termination
- Hazardous environment termination where fusion splicing is prohibited

Features

- Polished connector incorporating a mechanical splice
- Available in single mode and multimode
- Available for 250µm, 900µm, 2mm, 3mm and 2x3mm cables
- Reliable and enhanced optical performance
- Compatible with standard ST adaptors
- Termination can be repeated 2-3 times
- Packaging comes with a cable/buffer stripping template
- Compliant with IEC, EIA/TIA and Telcordia
- Fibre preparation kit available



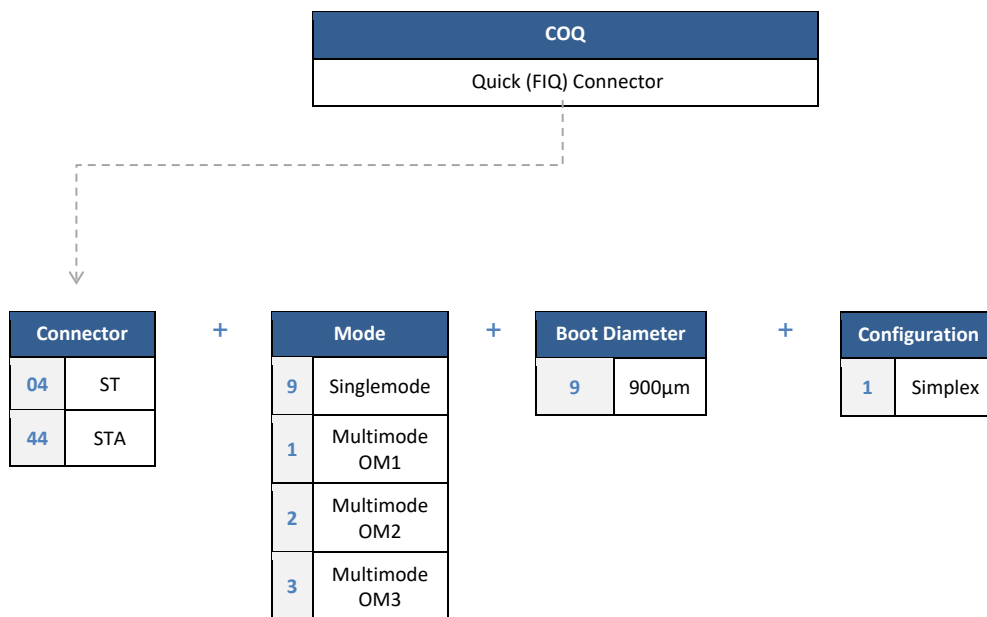
Specifications

DESCRIPTION

Fibre Type	Singlemode and Multimode
Insertion Loss (Max)*	0.50dB
Insertion Loss (Typical)*	0.30dB
Return Loss (Typical)*	50dB/55dB
Polishing Type	UPC and APC

*Using proper cleave process

Ordering Information



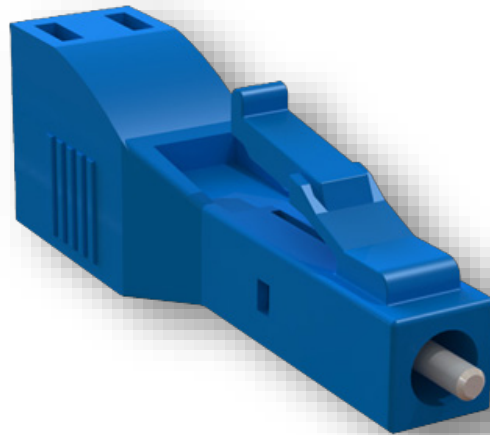
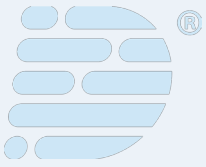
Examples:

COQ-04-2-9-1 - Quick (FIC) ST Connector Multimode OM2 Simplex 900µm Boot

COQ-04-9-9-1 - Quick (FIC) SC Connector Singlemode Simplex 900µm Boot

Please contact us for further information about the FIC termination Kit.

Attenuators



Singlemode Attenuators

Optical attenuators are used in fibre communication networks to reduce the power level of the optical signal launched onto the photo detector. They can be used directly on patch cords, which in turn can be inserted into an adaptor. They are designed to operate on a wide range of wavelengths and give accurate attenuation and low return loss.

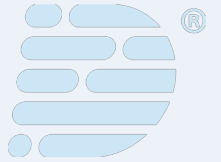
Datatronix attenuators are available in LC, SC, FC UPC/APC, MU UPC and from 1dB to 30db in 1db increments.

Applications

- Telecommunication networks
- FTTX
- Cable Television
- Local and Wide Area Networks
- Fibre optic sensors
- Test and measurement equipment

Features

- Accurate attenuation
- Low back reflection
- Plug-in type
- Broad wavelength band
- Flat response over all wavelengths
- Environmentally stable



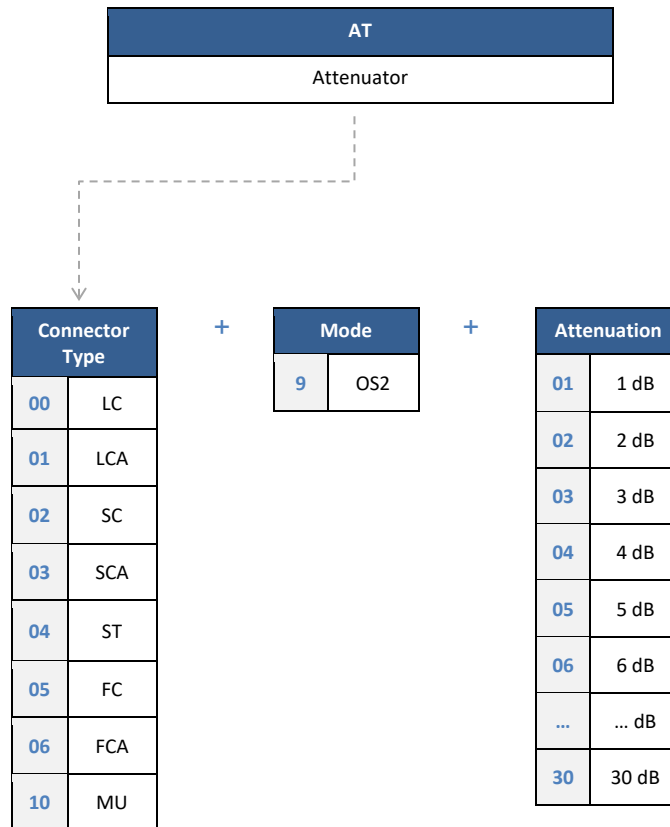
Attenuators

Specifications

Parameter

Available Range of Attenuation	1 to 30dB with 1dB increments
Operating Wavelength	1310 and 1550nm (or single wavelength)
Operating Band Pass	Dual Window 1310 and 1550nm (±25nm)
Attenuators ≤10dB	± 0.5 dB
Attenuators 11 to 30dB	± 1dB
Reflectance	UPC = 50dB APC = 60dB
International Standard	Telcordia GR-910-CORE

Ordering Information



Examples:

AT-00-9-06 - Singlemode Attenuator LC/APC 6 dB

AT-06-9-03 - Singlemode Attenuator FC/APC 3 dB



Always here when you need us.

Challenges this big need a global partner capable of scaling designs and delivering consistent quality on budget.

Datatronix (UK) Limited

Central Office

Suite 1, Lower Ground Floor
One George Yard, London
EC3V 9DF, United Kingdom
Tel: +44 203 5141758

Distribution Depot

Unit 2B, The Depot
Harmans Way, Weedon Bec
NN7 4PS, Northamptonshire
United Kingdom
Tel: +44 1327 226814

General Information

info@datatronix.com

Sales Enquiries

sales@datatronix.com

Europe

europe@datatronix.com

Latin America

latam@datatronix.com

Asia Pasific

apac@datatronix.com

Middle East & Africa

mea@datatronix.com

www.datatronix.com