

LX1 High Density LGX 1.5U Patch Panel

An innovative 1.5U, 19" rack mountable patch panel, designed for use in high density applications. It offers management of up to 72 fibres using MTP® optical cassettes with 24 fibres each and it's fully compatible with a variety of alternative LGX module options.

When used for fusion splicing it can house up to 24 fibres, using 2 x12 fibre splice trays and the customer can choose from a wide variety of adaptor loaded LGX plates.

The MLX1 LGX MTP® modules which are compatible with LX1 panel are designed for the transition between MTP® and standard LC connectors. They have a small form factor design and LX1 panel can house up to 3 MLX1 modules in 1U height. They come with 12 low loss LC duplex adaptors on the front and 2 MTP® on the back side. They contain 100% factory terminated and tested LC to MTP® fanouts.

Features

- 1.5U height
- 19" rack mountable
- Up to 3 LGX modules
- Compatible with 12 fibre splice trays
- Up to 72 fibres with MTP® and 24 with standard adaptors
- Metal construction
- Compatible with multiple LGX module options (MTP®, adaptors, etc.)

Applications

- Data centres
- High density applications
- Telecommunication networks
- Enterprise Networks
- Central Offices

Specifications

Patch Panel

ELEMENT	CHARACTERISTIC
Depth (mm) A	326.5mm
Width (mm) B	438mm
Height (mm) C	69.7mm
Rack Units	1.5
Capacity	3 x LGX type modules

MTP® Connector Performance

CONNECTOR MATING	IL AVERAGE	IL MAX	RETURN LOSS
MTP® Elite (MM)	0.10dB	0.35dB	N/A
MTP® (MM)	0.20dB	0.60dB	N/A
MTP® Elite (SM)	0.10dB	0.35dB	>60dB
MTP® (SM)	0.25dB	0.75dB	>60dB

Standards Compliance

- TIA/EIA-568-C.3 and ISO/IEC 11801 - cable
- IEC-61754-7 & EIA/TIA-604-5 - MTP®
- Compliant to Directive 2002/95/EC (RoHS) and REACH SvHC
- IEC-61754-20 (LC) & IEC-61754-14 (SC)
- IEC-60793

Ordering Information

DESCRIPTION	PART NUMBER
Datatronix LX1 High Density LGX 1.5U Patch Panel Unloaded	PPLX1-XX-XX-UL-1.5
Splice Tray For 12 Heatshrink Splice Protectors	FMST12-LX1
Blank LGX Plate	PLXBL-2
Empty LGX Plate For 8 x SC Simplex/LC Duplex Adaptors	PLX1-XX-XX-UL
Empty LGX Plate For 12 x SC Simplex/LC Duplex Adaptors	PLX2-XX-XX-UL
Empty LGX Plate For 3 x SC Duplex/LC Quad Adaptors	PLX3-XX-XX-UL
Empty LGX Plate For 6 x SC Duplex/LC Quad Adaptors	PLX4-XX-XX-UL
Empty LGX Plate For 8 x LC Simplex Adaptors	PLX5-XX-XX-UL
Empty LGX Plate For 12 x LC Simplex Adaptors	PLX6-XX-XX-UL
Empty LGX Plate For 8 x ST/FC Simplex Adaptors	PLX7-XX-XX-UL
Empty LGX Plate For 12 x ST/FC Simplex Adaptors	PLX8-XX-XX-UL

LC LGX Plates configuration

DESCRIPTION	PART NUMBER
LGX Plate with 8 x LC Simplex Multimode Beige Adaptors	PLX5-00-21-08
LGX Plate with 8 x LC Simplex Multimode OM3 Aqua Adaptors	PLX5-00-31-08
LGX Plate with 8 x LC Simplex Multimode OM4 Erika Violet Adaptors	PLX5-00-41-08
LGX Plate with 8 x LC Simplex Singlemode Blue Adaptors	PLX5-00-91-08
LGX Plate with 8 x LC Simplex Singlemode APC Green Adaptors	PLX5-00-91-08
LGX Plate with 12 x LC Simplex Multimode Beige Adaptors	PLX6-00-21-12
LGX Plate with 12 x LC Simplex Multimode OM3 Aqua Adaptors	PLX6-00-31-12
LGX Plate with 12 x LC Simplex Multimode OM4 Erika Violet Adaptors	PLX6-00-41-12
LGX Plate with 12 x LC Simplex Singlemode Blue Adaptors	PLX6-00-91-12
LGX Plate with 12 x LC Simplex Singlemode APC Green Adaptors	PLX6-01-91-12
LGX Plate with 8 x LC Duplex Multimode Beige Adaptors	PLX1-00-22-08
LGX Plate with 8 x LC Duplex Multimode OM3 Aqua Adaptors	PLX1-00-32-08
LGX Plate with 8 x LC Duplex Multimode OM4 Erika Violet Adaptors	PLX1-00-42-08
LGX Plate with 8 x LC Duplex Singlemode Blue Adaptors	PLX1-00-92-08

LGX Plate with 8 x LC Duplex Singlemode APC Green Adaptors	PLX1-01-92-08
LGX Plate with 12 x LC Duplex Multimode Beige Adaptors	PLX2-00-22-12
LGX Plate with 12 x LC Duplex Multimode OM3 Aqua Adaptors	PLX2-00-32-12
LGX Plate with 12 x LC Duplex Multimode OM4 Erika Violet Adaptors	PLX2-00-42-12
LGX Plate with 12 x LC Duplex Singlemode Blue Adaptors	PLX2-00-92-12
LGX Plate with 12 x LC Duplex Singlemode APC Green Adaptors	PLX2-01-92-12
LGX Plate with 3 x LC Quad Multimode Beige Adaptors	PLX3-00-24-03
LGX Plate with 3 x LC Quad Multimode OM3 Aqua Adaptors	PLX3-00-34-03
LGX Plate with 3 x LC Quad Multimode OM4 Erika Violet Adaptors	PLX3-00-44-03
LGX Plate with 3 x LC Quad Singlemode Blue Adaptors	PLX3-00-94-03
LGX Plate with 3 x LC Quad Singlemode APC Green Adaptors	PLX3-01-94-03
LGX Plate with 6 x LC Quad Multimode Beige Adaptors	PLX4-00-24-06
LGX Plate with 6 x LC Quad Multimode OM3 Aqua Adaptors	PLX4-00-34-06
LGX Plate with 6 x LC Quad Multimode OM4 Erika Violet Adaptors	PLX4-00-44-06
LGX Plate with 6 x LC Quad Singlemode Blue Adaptors	PLX4-00-94-06
LGX Plate with 6 x LC Quad Singlemode APC Green Adaptors	PLX4-01-94-06

SC LGX Plates configuration

DESCRIPTION	PART NUMBER
LGX Plate with 8 x SC Simplex Multimode Beige Adaptors	PLX1-02-21-08
LGX Plate with 8 x SC Simplex Multimode OM3 Aqua Adaptors	PLX1-02-31-08
LGX Plate with 8 x SC Simplex Multimode OM4 Erika Violet Adaptors	PLX1-02-41-08
LGX Plate with 8 x SC Simplex Singlemode Blue Adaptors	PLX1-02-91-08
LGX Plate with 8 x SC Simplex Singlemode APC Green Adaptors	PLX1-03-91-08
LGX Plate with 12 x SC Simplex Multimode Beige Adaptors	PLX2-02-21-12
LGX Plate with 12 x SC Simplex Multimode OM3 Aqua Adaptors	PLX2-02-31-12
LGX Plate with 12 x SC Simplex Multimode OM4 Erika Violet Adaptors	PLX2-02-41-12
LGX Plate with 12 x SC Simplex Singlemode Blue Adaptors	PLX2-02-91-12
LGX Plate with 12 x SC Simplex Singlemode APC Green Adaptors	PLX2-03-91-12
LGX Plate with 3 x SC Duplex Multimode Beige Adaptors	PLX3-02-22-03
LGX Plate with 3 x SC Duplex Multimode OM3 Aqua Adaptors	PLX3-02-32-03
LGX Plate with 3 x SC Duplex Multimode OM4 Erika Violet Adaptors	PLX3-02-42-03

LGX Plate with 3 x SC Duplex Singlemode Blue Adaptors	PLX3-02-92-03
LGX Plate with 3 x SC Duplex Singlemode APC Green Adaptors	PLX3-03-92-03
LGX Plate with 6 x SC Duplex Multimode Beige Adaptors	PLX4-02-22-06
LGX Plate with 6 x SC Duplex Multimode OM3 Aqua Adaptors	PLX4-02-32-06
LGX Plate with 6 x SC Duplex Multimode OM4 Erika Violet Adaptors	PLX4-02-42-06
LGX Plate with 6 x SC Duplex Singlemode Blue Adaptors	PLX4-02-92-06
LGX Plate with 6 x SC Duplex Singlemode APC Green Adaptors	PLX4-03-92-06

FC LGX Plates configuration

DESCRIPTION	PART NUMBER
LGX Plate with 8 x FC Simplex Multimode Adaptors	PLX7-05-21-08
LGX Plate with 8 x FC Simplex Singlemode Adaptors	PLX7-05-91-08
LGX Plate with 8 x FC Simplex Singlemode APC Adaptors	PLX7-06-91-08
LGX Plate with 12 x FC Simplex Multimode Adaptors	PLX8-05-21-12
LGX Plate with 12 x FC Simplex Singlemode Adaptors	PLX8-05-91-12
LGX Plate with 12 x FC Simplex Singlemode APC Adaptors	PLX8-06-91-12

ST LGX Plates configuration

DESCRIPTION	PART NUMBER
LGX Plate with 8 x ST Simplex Multimode Adaptors	PLX7-04-21-08
LGX Plate with 8 x ST Simplex Singlemode Adaptors	PLX7-04-91-08
LGX Plate with 12 x ST Simplex Multimode Adaptors	PLX8-04-21-12
LGX Plate with 12 x ST Simplex Singlemode Adaptors	PLX8-04-91-12

MLX1 MTP® Cassette Module

DESCRIPTION	PART NUMBER
Datatronix LC to MTP® Male MLX3 LGX Cassette Module with 12 LC Duplex OM3 Aqua Adaptors Polarity A	MLX1-20003212-A
Datatronix LC to MTP® Male Elite MLX1 LGX Cassette Module with 12 LC Duplex OM3 Aqua Adaptors Polarity A	MLX1-24003212-A
Datatronix LC to MTP® Male MLX1 LGX Cassette Module with 12 LC DuplexOM4 Erika Violet Adaptors Polarity A	MLX1-20004212-A
Datatronix LC to MTP® Male Elite MLX1 LGX Cassette Module with 12 LC DuplexOM4 Erika Violet Adaptors Polarity A	MLX1-24004212-A
Datatronix LC to MTP® Male MLX1 LGX Cassette Module with 12 LC Duplex SM Blue Adaptors Polarity A	MLX1-20009212-A
Datatronix LC to MTP® Male Elite MLX1 LGX Cassette Module with 12 LC Duplex SM Blue Adaptors Polarity A	MLX1-24009212-A
Datatronix LC to MTP® Male MLX1 LGX Cassette Module with 12 LC Duplex SM APC Green Adaptors Polarity A	MLX1-20019212-A
Datatronix LC to MTP® Male Elite MLX1 LGX Cassette Module with 12 LC Duplex SM Green Adaptors Polarity A	MLX1-24019212-A

For polarity B or C please change the last letter of the part numbers above.

Technical Drawing

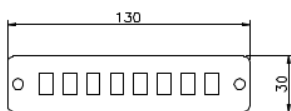
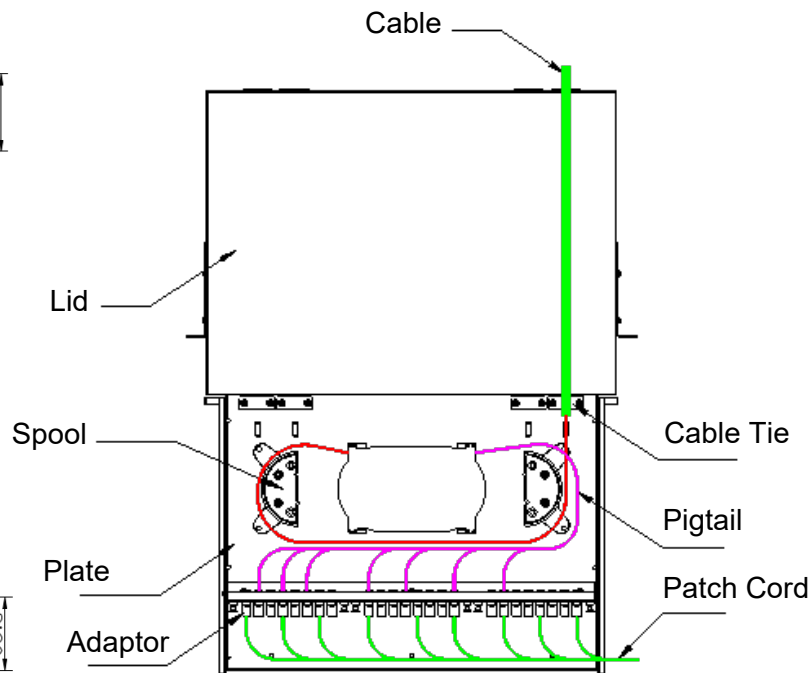
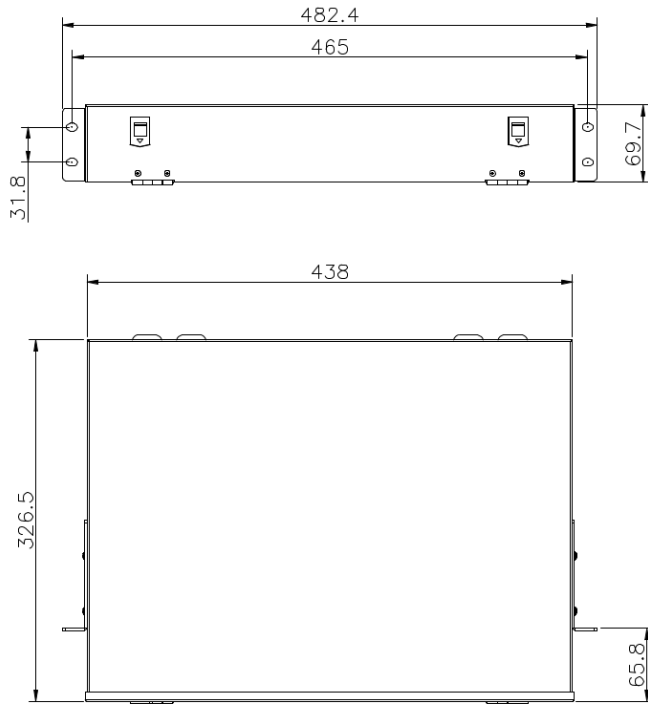
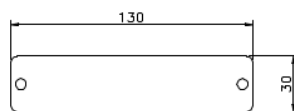


Plate for 8-LC Simplex adaptor



Blank Plate

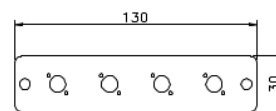


Plate for 4 FC simplex adaptor

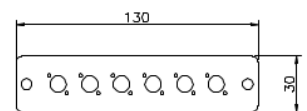


Plate for 6 FC simplex adaptor

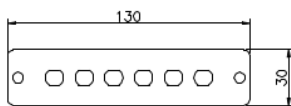


Plate for 6 ST simplex adaptor

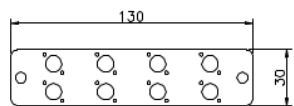


Plate for 8 FC simplex adaptor

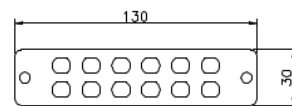


Plate for 12 FC simplex D type adaptor

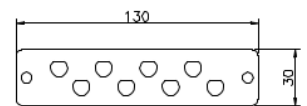


Plate for 8 FC simplex D type adaptor

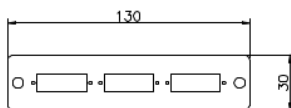


Plate for 3 SC duplex adaptor

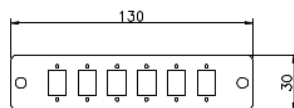


Plate for 6 SC simplex adaptor

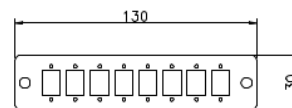
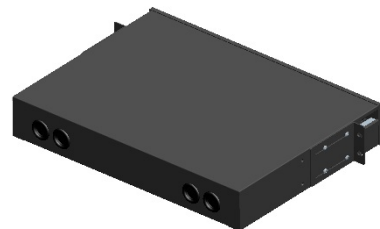
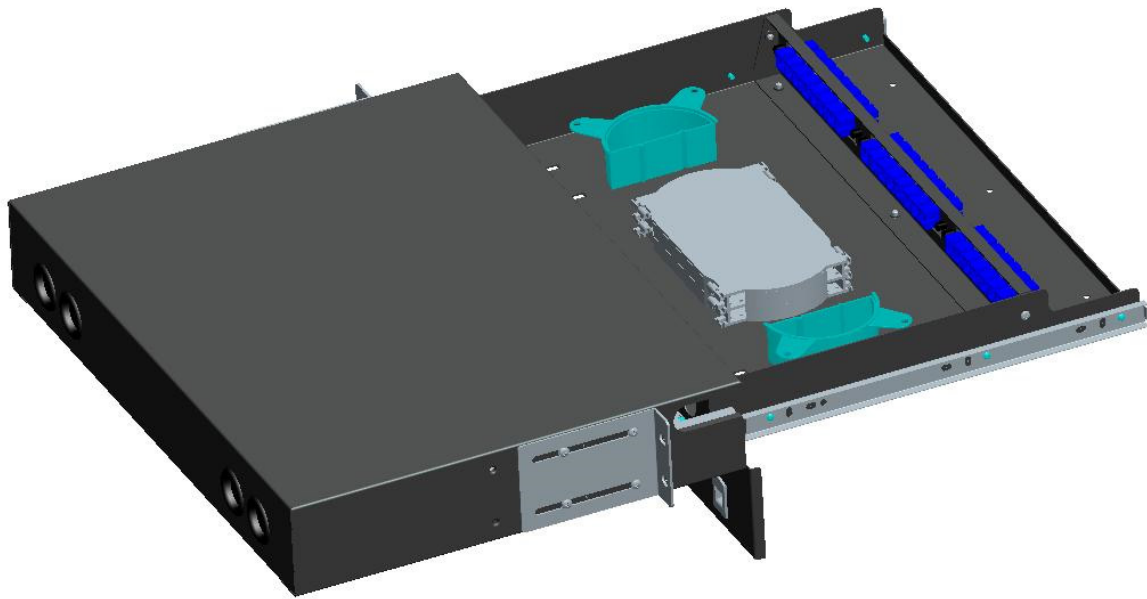


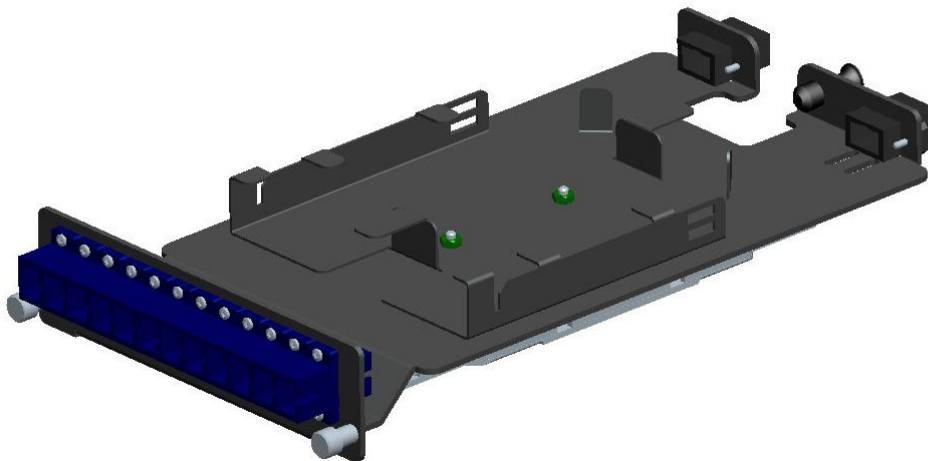
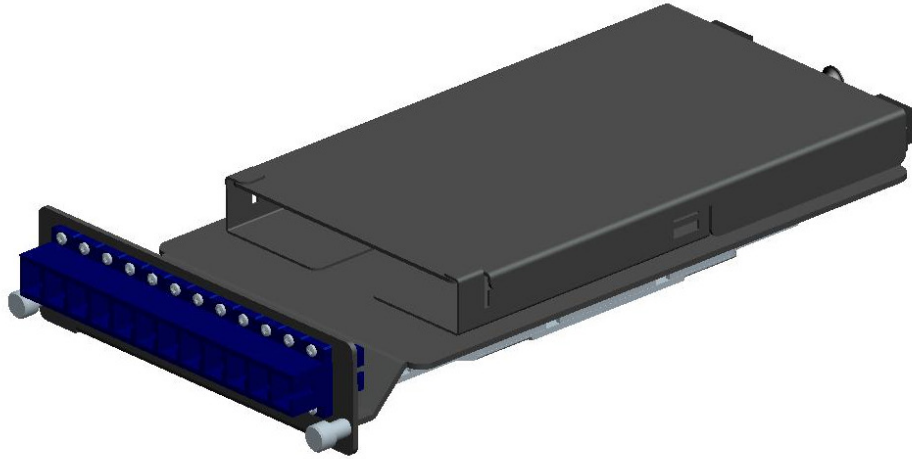
Plate for 8 SC simplex adaptor

Additional Images

Patch Panel



MTP[®] LGX Cassette Module



MTP[®] is a registered trademark of US Conec Ltd